

TOTAL CONSTRUCTION

EXCELLENCE IN
CONSTRUCTION
SINCE 1995

FOOD & BEVERAGE | CAPABILITY STATEMENT



STACKED FARM

FOOD & BEVERAGE DESIGN AND CONSTRUCTION SPECIALISTS



MECWA RICHMOND VIC

ABOUT US

SINCE 1995, TOTAL CONSTRUCTION HAS DELIVERED HIGH QUALITY PROJECTS ACROSS AUSTRALIA EARNING A REPUTATION AS A BUILDER THAT EXCEEDS EXPECTATIONS.

With a team of over 150 industry professionals and a national turnover exceeding \$300 million, we have the expertise and capability to manage projects of all sizes and complexities.

We specialise in self storage, commercial, industrial, food & beverage, aged care and health and sectors, offering end-to-end services from feasibility studies and design through to engineering and construction. By challenging conventional methodologies and embracing innovation, we ensure smarter, more efficient project delivery.

We build more than just structures—we build strong, lasting relationships through integrity, reliability, and results-driven expertise.

AT TOTAL CONSTRUCTION, OUR PEOPLE ARE OUR GREATEST ASSET.

We've built a team of industry specialists who bring deep sector knowledge and hands-on experience to every project. Their expertise enables us to navigate complex challenges, optimise efficiencies, and deliver outstanding results.

With a client-first approach, we tailor our services to suit each project's unique needs, offering flexible delivery models such as design and construct, construction management, and lump sum contracts. Our commitment to collaboration and innovation ensures seamless project execution and long-term value for our clients.



30+

Years of Experience



150+

Total Team Members



\$2B

Completed Projects



300M+ Annual Turnover



80%

Repeat Business



3 Offices

Sydney
Melbourne
Brisbane



\$0

Bank Finance



30+

Green Star Projects

OUR FOOD & BEVERAGE ENGINEERING TEAM

Our Food & Beverage Engineering Team delivers smart, compliant and efficient design and construction solutions tailored to the industry's unique needs.



ROB BLYTHMAN
GROUP GENERAL MANAGER
FOOD & BEVERAGE

Rob has more than 30 years experience in senior management roles across a variety of industries including Construction, Telecommunications and Broadcast in the Asia Pacific region. Rob's major strength is in developing opportunities, preparing and implementing sales and marketing strategies and building strong relationships with clients at all levels.



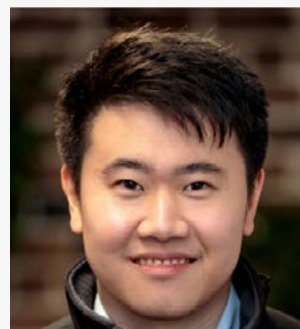
TONY TATE
GENERAL MANAGER
FOOD & BEVERAGE

Tony brings a strong background in managing manufacturing facilities, process engineering and operations. His expertise spans varied project types, including high-risk, bakery, beverage, meat, and dairy facilities, where he's led efforts in process optimisation, business development, capital cost control and project management.



TOM FRANKS
PROCESS DESIGN
ENGINEER

Tom is a Process Design Engineer with over 10 years of industry experience and a strong foundation in technical knowledge and diverse building methods. His expertise in design development ensures every project is delivered in line with the brief, while upholding the highest standards of quality, safety, and compliance.



NIGEL DENG
PROJECT MANAGER
FOOD & BEVERAGE

Nigel is a Project Manager with over a decade of industry experience. Nigel brings a strong technical foundation and a deep understanding of building methods to every project. His expertise in project management ensures that each development is delivered precisely to brief, while maintaining the highest standards of quality, safety, and regulatory compliance.



30 YEARS STRONG

At Total Construction, we believe success is built on dedication, teamwork, and a commitment to excellence. Our people are at the heart of everything we do, driving us to exceed industry

standards and continually raise the bar. With strong foundations behind us, we're focused on building an even more varied, innovative, and successful future.



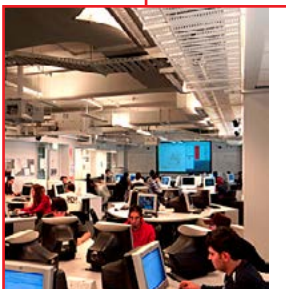
1995

Total Construction was incorporated in 1995 by Steve Taylor and Bill Franks. Our first office was in Wetherill Park NSW & was only 8m2.



1995

Our first projects with Rheem Hot Water and Kennards Self Storage marked the beginning of long and successful partnerships.



2005

Delivered our first health and education projects: Stockland Bateau Bay Medical Centre (\$750K) and RMIT Computer Studio in Victoria (\$1M).



2007

Delivered our first aged care project, BUPA's Amity in Windsor (\$1.1M), and our first project over \$10M, Uniting Peakhurst (\$14.7M).



2010

Opened our Queensland office and secured a major win with the \$12.1M Belmont Private Hospital project.



2012

Won projects over \$20M: Valley Private Hospital (\$20.5M) & first renewable energy project, Central Thermal Plant Stage 1 (\$25M) & Stage 2 (\$27M).



2020

Our Victoria team secures their biggest project to date with the \$38 million TriCare Williams Landing Aged Care residences.



2022

Completed our first 16,000m² Data Centre project (\$53M), featuring efficient cooling, robust power infrastructure, and advanced security.



1997

Expanded into Victoria with an East Melbourne office, while the Sydney team moved to a new office in North Strathfield.



2002

\$50 million in completed construction work, solidifying our position as leaders in self storage, commercial, and industrial sectors.



2008

Won the Master Builders Award for Excellence in Construction for the Marcellin College Gym, Victoria (Commercial Building under \$5M).



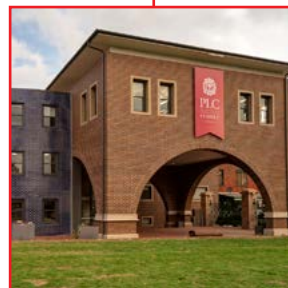
2009

Food & Beverage Group established, securing its first major project: the \$6M Tip Top Bakery.



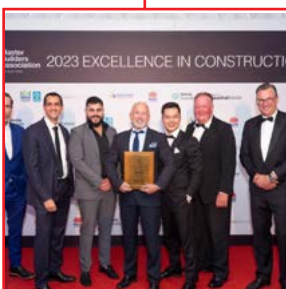
2017

Total Special Projects, our fitout & refurbishment division, is launched with project wins across food & beverage, self storage, and aged care sectors.



2019

Won Master Builders Awards for Excellence in Construction for Edensor Gardens Aged Care and Presbyterian Ladies' College, Croydon.



2023

Awarded two Master Builders Awards for KOPWA Aged Care, Roseville (\$25M), and HammondCare Aged Care, Miranda (\$25M).



2025

Groundbreaking on Stacked Farm, the world's largest indoor vertical farm by output across 10,000m² at Melbourne Airport.

OUR PURPOSE

MAKING A POSITIVE DIFFERENCE IN PEOPLE'S LIVES THROUGH EXCELLENCE IN CONSTRUCTION.

Total Construction is built on a foundation of strong core commitments that define who we are and how we work. We are a high-performing team that consistently strives for excellence, driven by a culture that values family and fosters a supportive, inclusive environment—making us a great place to work. Our people-first approach extends to our clients, with whom we aim to build lasting partnerships. We are committed to acting in our clients' best interests at every stage of a project and pride ourselves on being their preferred partner of choice. By aligning with like-minded clients who share our values and vision, we create collaborative relationships that deliver outstanding results.



ACCOUNTABILITY

We take responsibility for our actions and decisions, ownership of our work and do what we say we will do.



RESPECT

We promote healthy relationships, encourage collaboration and create positive and supportive environments where everyone feels valued and heard.



INTEGRITY

We adhere to strong moral and ethical principles, doing what is right.



COLLABORATION

We foster teamwork, innovation and problem solving, ensuring individuals connect to actively and achieve the best possible outcomes.



MENTORSHIP

We emphasise collaboration, learning and continuous transfer of skills and knowledge; empowering our employees to reach their potential and contribute to collective success.



INGENUITY

We support and empower our teams to take initiative, proactively problem solve and drive progress in the pursuit of excellence.

ONE NATIONAL TEAM

WITH A TEAM OF OVER 150 PROFESSIONALS ACROSS AUSTRALIA, TOTAL CONSTRUCTION HAS A STRONG NATIONAL FOOTPRINT AND A HIGHLY AGILE WORKFORCE.

Our people collaborate across borders to share knowledge, drive innovation, and apply best practices to every project. As a proudly Australian-owned company, we are backed by a diverse and specialist-skilled team, holding building licenses in every state and delivering tailored solutions nationwide.

As a builder that consistently exceeds expectations, our capabilities span feasibility studies, design, engineering, and construction, allowing us to challenge conventional methodologies and deliver innovative, end-to-end solutions from concept through to completion.

AT THE HEART OF OUR OPERATIONS IS A COMMITMENT TO DELIVERING QUALITY OUTCOMES THAT MEET ALL STATUTORY OBLIGATIONS.

Our approach integrates:

- Comprehensive analysis and planning Multi-disciplinary expertise throughout design and construction
- Robust quality, safety, and environmental management systems
- Clear and effective communication with all stakeholders
- Ongoing training and awareness programs for all staff

Together, these strengths position Total Construction as a trusted national partner for high-quality, future-focused projects.



OUR EXECUTIVE MANAGEMENT TEAM

At Total Construction we pride ourselves on our experienced team to ensure that we deliver what we promise and add value on our projects.



STEVE TAYLOR
MANAGING
DIRECTOR

Based in our Sydney office, Steve provides corporate guidance for the company on all strategic and financial issues. Steve adopts a hands-on approach and works closely with key stakeholders. He is a founding shareholder of Total Construction and has extensive experience across all sectors of the building industry.



SIMON HINNEBERG
CHIEF OPERATING
OFFICER

Seasoned leader Simon boasts 30+ years in senior management with tier 1 contractors across Australia, New Zealand, and the UK. After establishing and growing Total Construction's operations in Queensland for 14 years, he currently steers Total Construction's operations, leveraging his immense industry expertise to provide strategic vision and drive sustainable growth.



KA CHAN
CHIEF FINANCIAL
OFFICER

Ka is a CPA with over 19 years of experience in finance, spanning banking, marketing, property management and construction industries. The key financial advisor to the Total Construction Advisory Board and Executive Management Team, Ka informs Total Construction's strategy. Developing an efficient funding and treasury function, Ka constructs a framework to ensure ongoing compliance with statutory and reporting requirements.



KAREN JACOBS
GROUP GENERAL MANAGER
CORPORATE SERVICES

An MBA graduate, Karen provides strategic leadership for our corporate services functions and drives the people, marketing and ICT strategy at Total Construction. Empowering our teams to continually seek ways to fulfill our purpose of making a difference to people's lives through excellence in construction, whilst also championing increased productivity, innovation, personal development, improved safety and quality outcomes.



GUY FINNIS
GENERAL MANAGER -
VICTORIA

With over 25 years in the construction industry, Guy has held Design Manager, Project Manager, Construction Manager and General Manager positions. His portfolio includes projects in the health, commercial, industrial and residential sectors, new constructions, refurbishments and fit outs. Guy's strength is his strong collaborative approach, and ability to bring the best out of people and projects.



JEREMY MCKENZIE
GENERAL MANAGER -
QUEENSLAND

Drawing on over 20 years experience in the construction industry, Jeremy leads multiple teams for optimal outcomes. Managing all aspects of Total Construction's Queensland operations, Jeremy focuses on people management, whilst overseeing estimating, safety, financial management, client relations, growth and commercial optimisation.



ROB BLYTHMAN
GROUP GENERAL MANAGER
FOOD & BEVERAGE

Rob has more than 30 years experience in senior management roles across a variety of industries including Construction, Telecommunications and Broadcast in the Asia Pacific region. Rob's major strength is in developing opportunities, preparing and implementing sales and marketing strategies and building strong relationships with clients at all levels.



JAMIE TAYLOR
PRE-CONSTRUCTION
MANAGER

Embarking on his professional journey with Total Construction, Jamie's career was further propelled into leadership positions across a diverse range of industries including energy, mining and manufacturing, spanning regional QLD, NSW, the NT and PNG. Upon rejoining Total Construction in 2018, Jamie has taken the lead on overseeing the pre-construction functions within NSW, while also championing critical business endeavours to ensure their success.

OUR SERVICES

TOTAL CONSTRUCTION HAS BUILT A REPUTATION FOR DELIVERING HIGH-QUALITY PROJECTS ACROSS A RANGE OF INDUSTRIES. AS A TRUSTED PARTNER TO CLIENTS, WE MANAGE EVERY STAGE OF THE PROJECT LIFECYCLE WITH PRECISION AND EXPERTISE.

Our end-to-end approach ensures seamless execution—from initial planning and design through to construction and handover. We prioritise efficiency, cost-effectiveness, and transparency, delivering projects that meet the highest standards.

At the heart of our success is our commitment to understanding our clients' needs, aligning with their vision, and bringing their projects to life with quality, integrity, and reliability.

PRE-CONSTRUCTION & CONSTRUCTION PLANNING

Project planning to optimise efficiency & cost-effectiveness ensures seamless delivery from concept to completion. This includes site & risk analysis, feasibility studies, procurement & scheduling strategies.

PROJECT MANAGEMENT

End-to-end project oversight for seamless delivery within scope, schedule, and budget. Project Managers coordinate all stakeholders, manage risk, oversee procurement, & ensure compliance with industry standards and regulations.

DOCUMENTATION & APPROVALS

Preparation, submission, & approval of documentation, including planning permits, development applications, & regulatory compliance. Ensuring legal & contractual obligations are met before construction begins.

MULTI-DISCIPLINARY PROCESS ENGINEERING

Combining expertise in design, construction, & compliance to deliver efficient, hygienic, and future-ready production facilities, tailored to meet the unique needs of the food and beverage industry.

PROJECT COSTING & CONTROLS

Projects are delivered on time & within budget through detailed cost planning, real-time tracking, & proactive risk management. Transparency & accountability across all phases to support informed decisions & maintain financial control.

DETAILED DESIGN

Detailed design service transforms concepts into build-ready solutions, providing comprehensive drawings and documentation that ensure functionality, compliance, and a smooth transition into construction.

SAFETY & QUALITY CONTROL

Prioritising safety & quality control at every stage of the project. Through rigorous standards, regular audits, & a proactive approach, they ensure safe worksites and high-quality outcomes that meet both regulatory & client expectations.

CONSTRUCTION MANAGEMENT & BUILDING

End-to-end construction management & building services, overseeing every phase with precision & efficiency. Hands-on approach ensures quality, safety, & timely delivery, bringing projects to life to the highest standard.

DIGITAL PROJECT DELIVERY

Enhancing collaboration & efficiency through tools like BIM and cloud-based platforms. Enabling real-time access to project data, streamlines communication, and supports faster, more informed decision-making across all stages.

OUR SECTORS

TOTAL CONSTRUCTION HAS SUCCESSFULLY DELIVERED A DIVERSE RANGE OF PROJECTS ACROSS MULTIPLE INDUSTRY SECTORS. WITH EACH BUILD, WE REFINE OUR EXPERTISE, ENHANCE OUR PROCESSES, AND DRIVE CONTINUOUS IMPROVEMENT.

Our delivery approach is built on strong partnerships with consultants, subcontractors, and suppliers. By fostering long-term relationships with trusted industry partners, we mitigate risks, optimise efficiencies, and ensure every project is delivered to the highest standard—on time and within budget.

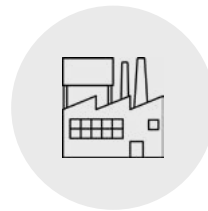
At Total Construction, collaboration, reliability, and quality are at the core of everything we do.



SELF-STORAGE



COMMERCIAL



INDUSTRIAL



FOOD & BEVERAGE



DATA CENTRES



HEALTH



AGED CARE



SOCIAL & AFFORDABLE HOUSING



EDUCATION & CHILDCARE



RETAIL



RENEWABLE ENERGY



FITOUT & REFURBISHMENT



COCA-COLA AMATIL, MOORABBIN VIC

FOOD & BEVERAGE SECTOR

BUILDING SMARTER, SAFER, & MORE EFFICIENT FACILITIES OR AUSTRALIA'S FOOD & BEVERAGE SECTOR.

At Total Construction, we understand the complex demands of food and beverage manufacturing - from stringent hygiene standards and temperature control to automation, compliance, and continuous operation. Our national team brings deep sector knowledge, enabling us to deliver high-performing, fit-for-purpose facilities that help clients meet production targets and regulatory requirements while maintaining the highest standards of quality and efficiency.

Whether it's a greenfield development or a complex brownfield upgrade, our integrated

team of specialists is experienced in the design, engineering, and construction of sophisticated food-grade environments. We deliver everything from process plants and packaging halls to cold storage facilities, clean rooms, and temperature-controlled distribution centres - always with a strong focus on safety, compliance, and minimising operational disruption.

With decades of hands-on experience working in live environments, we pride ourselves on our collaborative approach and detailed planning, ensuring critical operations continue while we deliver on time and on budget. At Total Construction, we don't just build to spec - we partner closely with our clients to understand their unique processes and develop tailored solutions that support long-term growth and performance.

EARLY CONTRACTOR INVOLVEMENT

Engaging Total Construction at the earliest stages ensures best client outcomes are achieved. Our Early Contractor Involvement (ECI) model coupled with our Construction Management processes, ensures all works are scoped, risks are identified and mitigated, and an effective approach is provided.

EXPERIENCED DELIVERY TEAMS

Our delivery teams are experienced in the end-to-end delivery of all Food & Beverage projects. Each member is empowered to think practically and innovative to deliver a faultless solution for our clients. Delivery is focused on ensuring facilities are operational and accessible to tenants as safely and quickly as possible.

VALUE FOR MONEY AT EVERY STAGE

We are committed to ensuring our clients receive value for money at every stage of project delivery. We achieve this through critiquing the design at early stages, value engineering during detailed design phase and focusing on stringent sourcing of materials and labour.



PROJECT SNAPSHOT

HIGH RISK CHILLED & READY MADE MEALS

Beak & Johnston City Kitchen,
Arndell Park NSW
Manufacturing Plant
\$36m

Design and Construction of a new food production facility.

My Muscle Chef, Yennora NSW
Manufacturing Plant
\$17m

Design and Construction of the fit out of a 9,385m² brownfield facility to produce ready meals.

Alpha Flight Services (dnata),
Melbourne Airport VIC
In-flight Catering Facility
\$15m

Design and Construction of a new land-side catering facility.

Alpha Flight Services (dnata),
Mascot NSW
In-flight Catering Facility
\$4m

Construction of an air-side catering facility.

Alpha Flight Services (dnata),
Brisbane Airport QLD
In-flight Catering Facility
\$2m

Roof replacement & refrigeration upgrade to existing catering facility.

Alpha Flight Services (dnata),
Adelaide SA
In-flight Catering Facility
\$8m

Design and Construction Management of a new purpose designed in-flight catering facility.

Alpha Flight Services (dnata),
Perth Airport WA
In-flight Catering Facility
\$3m

Construction Management of an extension and car parking facilities.

Kitchen Food Company,
Riverwood NSW
High Risk Ready Meal Facility
\$6m

Design & Construction of a purpose built high risk ready meals facility.

BAKERY

Goodman Fielder,
Erskine Park NSW
Manufacturing Plant
\$2m

Upgrade works to an existing food manufacturing facility & management of equipment installation.

Goodman Fielder,
Moorebank NSW
Warehouse
\$6m

Re-purpose existing warehouse into a new production line facility and chiller.

Laurent Boulangerie,
Braeside VIC
Bakery Facility
\$5m

Design and Construction of a new bakery facility.

TipTop (George Weston Foods),
Newcastle NSW
Bakery Facility
\$6m

Full civil, structural, internal and external fit out & upgrade works at existing bakery facility.

DAIRY

Peters Ice Cream, Mulgrave VIC
Manufacturing Plant
\$16m

Design & Construction of an extension to the existing manufacturing facility.

Mead Johnson Nutrition,
Derrimut VIC
Manufacturing Plant
\$4m

Hygienic extension to an infant formula manufacturing plant.

Lion Nathan, Laverton VIC
Cool Room
\$1.2m

Design & Construction of a cool room to store soft ripened cheese & installation of air flow panelling.

MEAT

B&E Foods, Ormeau QLD
Manufacturing Plant
\$13m

2,286m² extension to an existing food manufacturing facility and fit out to food hygiene standards.

B&E Foods, Wangara WA
Manufacturing Plant
\$4m

Conversion & fit out of existing warehouse into a processing facility.

B&E Foods, Blacktown NSW
Manufacturing Plant
\$6m

2,300m² extension to an existing food manufacturing facility and fit out to food hygiene standards.

Illawarra Smallgoods,
Fairy Meadow NSW
Warehouse
\$6m

Construction of a 1,200 pallet Automatic Storage and Retrieval System (ASRS) & fit out of freezers and cool rooms.

COLD STORE

Wingham Beef Exports,
Taree NSW
Cold Store Facility
\$6m

Construction of a new cold store and loading facility, packaging 'Plate Freezer' structure and truck turning area.

BOTTLING

Full View Plastics,
Smithfield NSW
Warehouse
\$3m

Construction of a controlled segregated warehouse.

BLOWFILL PRODUCTION LINE

Coca-Cola Amatil,
Northmead NSW
Manufacturing Plant
\$3m

Construction of blowfill production line.

CLIENT SNAPSHOT

The logo for Asahi, featuring the word "Asahi" in a bold, blue, sans-serif font.

STACKED FARM



CLIENT
Stacked Farm

PROJECT VALUE
\$49 million

CONTRACT TYPE
Design & Construct

LOCATION
Tullamarine VIC

STACKED FARM DELIVERS HIGH-QUALITY PRODUCE YEAR-ROUND THROUGH ITS STATE-OF-THE-ART AUTOMATED INDOOR VERTICAL FARM TECHNOLOGY.

Engineered for efficiency, the facility will produce 3.4 million kgs of herbs and leafy greens annually within **3,586 sqm of grow rooms** operated with industry-leading proprietary technology.

Advanced robotics, AI and machine learning oversee seeding, germination, and plant health, ensuring **precision, consistency, and minimal waste**. From seed to pack, end-to-end automation eliminates human intervention and guarantees pristine quality.

Stacked Farm operates with **47% higher lighting energy efficiency, a proprietary zero-waste water**

system, 100% green energy and approximately 15 staff.

Upon completion, this will be the world's largest fully automated indoor vertical farm by volume output.

Total Construction Victoria and our Food & Beverage Engineering team were engaged under an **Early Contractor Involvement (ECI) model**. This approach enabled efficient coordination with Stacked Farm and Melbourne Airport, ensuring the design, construction, and fit out approvals were aligned with project requirements and delivered within the set timeframes. Melbourne Airport commended **Total Construction's methodical and efficient approach**, recognising the team's commitment to quality, collaboration, and timely delivery throughout the planning phase. **The project is now under construction.**

MY MUSCLE CHEF



CLIENT
My Muscle Chef

PROJECT VALUE
\$22 million

CONTRACT TYPE
Design and Construct

LOCATION
Yennora NSW

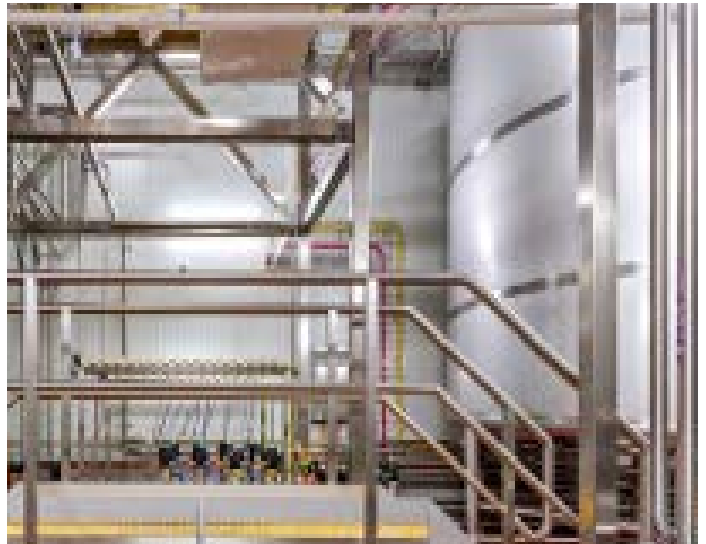
MY MUSCLE CHEF OFFERS OVER 70 HIGH-QUALITY READY-MADE MEALS, DELIVERING SMART NUTRITION & EXCEPTIONAL TASTE FOR CONSUMERS FOCUSED ON HOLISTIC HEALTH AND FITNESS GOALS.

Total Construction was engaged to deliver the internal fit out of a new Ready Meals Facility for My Muscle Chef. The project involved finalising **fit out design layouts, securing the Client Development Certificate, and completing all works to meet stringent hygienic food preparation standards.** The brownfield base building was extended to accommodate the client's operations, with Total Construction commencing the fit out once the base build was complete.

A new base slab was installed with **integrated drainage** and graded falls, ensuring effective washdown and easy maintenance throughout the facility. The fit out covered essential areas, including receivables, dry and frozen storage, preparation, cooking zones, packaging, and dispatch docks—each **designed to meet food-grade standards and support a streamlined production workflow.**

Despite a tight program, with base building handover in August 2021 and the client aiming for operational readiness by December, Total Construction effectively managed multiple work fronts to meet the ambitious timeline. Our expertise in food facility construction guided design decisions and ensured the delivery of a high-quality, functional, and compliant facility tailored to My Muscle Chef's operational needs.

PETERS ICE CREAM



CLIENT
Charter Hall

PROJECT VALUE
\$16 million

CONTRACT TYPE
Design & Construct

LOCATION
Mulgrave VIC

TOTAL CONSTRUCTION WAS ENGAGED BY CHARTER HALL TO DESIGN AND CONSTRUCT AN EXTENSION TO THE PETERS ICE CREAM PLANT, ENSURING SEAMLESS INTEGRATION WITH THE EXISTING LIVE FOOD PRODUCTION FACILITY.

Our specialist Food & Beverage Engineering team collaborated closely with our Design & Construction team to meticulously plan and execute the project, **prioritising food safety, hygiene, and operational efficiency while minimising disruption to ongoing operations.**

When appointed as the lead contractor in 2023, alongside Watson Young Architects and

WGA Project Managers, the project's design documentation was only 25% complete. Through a collaborative approach, we worked closely with the client to refine and **develop the design to full 100% documentation**, ensuring all project requirements were captured and implemented effectively.

The extension features concrete and steel mezzanines, providing access to newly constructed plant rooms. Several breakthrough connections into the live facility were required, each carefully coordinated to maintain continuous operations while seamlessly re-diverting existing services.

Recognising the critical importance of food safety, we applied our **proven methodologies to ensure zero contamination risks**, delivering a high-quality outcome for our client.

B&E FOODS



CLIENT
B&E Foods

PROJECT VALUE
\$13.1 million

CONTRACT TYPE
Design & Construct

LOCATION
Ormeau QLD

B&E FOODS IS A LEADING WHOLESALE DISTRIBUTION COMPANY SPECIALISING IN QUALITY POULTRY, FRESH & FROZEN MEAT, SEAFOOD & GROCERY TO THE FOOD SERVICE INDUSTRY.

Total Construction has delivered multiple projects for long-term client B&E Foods, including Blacktown (NSW), Ormeau (QLD), and Perth (WA).

In Ormeau, Total Construction completed a **2,286m² extension to their existing poultry processing facility**. The expansion was designed to support new processing lines for poultry de-boning and preparation, **enhancing the site's overall production capacity**. Constructed at the rear of the facility using pre-cast panels, the new build was

delivered as a separate fire compartment to comply with **stringent fire safety regulations**.

The fit-out was executed to meet **strict food hygiene standards**, with PIR insulated panels installed on internal walls and sealed, epoxy-coated concrete flooring throughout. The extension includes a dry goods store, freezer, dispatch and loading dock, knife job room, chicken storage area, and a deep chiller—each **tailored to the operational demands** of a modern poultry processing environment.

Working adjacent to a **24/7 live warehouse**, we carefully adapted the delivery program to **minimise disruption**. This enabled continuous operations on site and resulted in a seamless handover that exceeded client expectations.

MARS AUSTRALIA



CLIENT

Mars Australia Pty Ltd

PROJECT VALUE

\$3.2 million

CONTRACT TYPE

Design & Construct

LOCATION

Ballarat VIC

MARS AUSTRALIA IS THE AUSTRALIAN DIVISION OF MARS, INCORPORATED, A GLOBAL COMPANY KNOWN FOR ITS CONFECTIONERY, PETCARE AND FOOD PRODUCTS.

As part of the broader CCR In-Situ Project, Total Construction was awarded the Design and Construction contract for the **delivery of a new Conche Building** at the existing Mars chocolate processing facility. This **critical upgrade** formed one of several packages of work aimed at **modernising and enhancing operations at the site**.

Delivering this project within a live, operational food manufacturing environment presented

a unique set of challenges. The vast majority of Mars' processing **equipment remained active throughout the construction period**. Ensuring food safety and maintaining the highest safety standards were non-negotiable priorities.

A key innovation on the project was the use of robust, **custom-designed hoardings tailored to the diverse work zones**. These provided effective separation between construction activities and operational areas, **minimising disruption and ensuring safe working conditions**.

The project was strategically staged to align with the client's requirement for minimal downtime. A structured approach allowed the team to **efficiently complete the works while maintaining continuous production for the client**.

MEAD JOHNSON NUTRITION



CLIENT

Mead Johnson Nutrition

PROJECT VALUE

\$3.8 million

CONTRACT TYPE

Design & Construct

LOCATION

Derrimut VIC

MEAD JOHNSON NUTRITION IS A GLOBAL LEADER IN DEVELOPING SCIENCE-BASED NUTRITIONAL PRODUCTS, SUPPORTING THE HEALTH AND DEVELOPMENT OF BABIES WORLD WIDE.

Total Construction was awarded the contract for the internal facility **fit-out to support the expansion** of Mead Johnson's milk powder production facility, including associated building services. The project was **focused on a high hygiene zone**, with construction activities carefully scheduled during a planned plant shutdown. Works outside the hygiene zones, which were not dependent on the shutdown, were progressed to allow for process equipment installation.

The scope included **modifications to internal sandwich panel walls, installation of new flooring, updated lighting, and alterations to the HVAC system.** Maintaining strict hygiene standards throughout all construction phases was critical to the project's success.

A significant portion of the work was executed within a tightly scheduled shutdown period of less than 30 days. Achieving this required meticulous planning and close coordination among key trades to ensure a **timely and effective delivery.**

Leveraging its in-house 3D drafting capability, Total Construction utilised the BECA 3D model to develop a step-by-step methodology for **managing complex elements of the project.**

ALPHA FLIGHT SERVICES



CLIENT
dnata catering

PROJECT VALUE
\$43 million

CONTRACT TYPE
Various

LOCATIONS
NSW, VIC, QLD, SA, WA

ALPHA FLIGHT SERVICES, NOW DNATA CATERING, IS A LEADING IN-FLIGHT CATERING COMPANY, CHOSEN BY MANY OF THE WORLD'S AIRLINES FOR ITS FRESH, AWARD-WINNING MEALS.

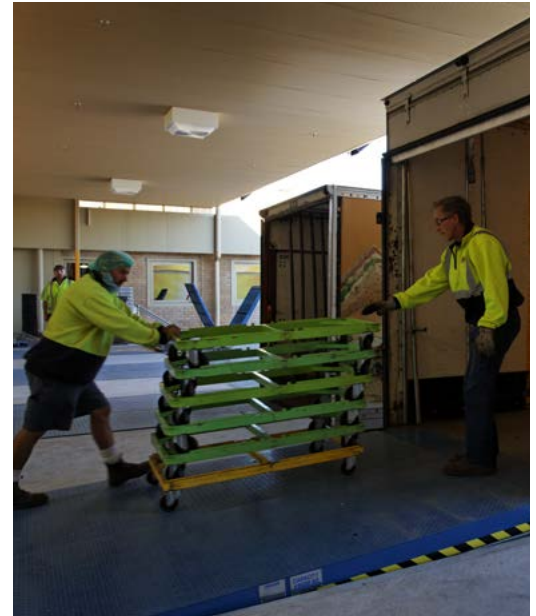
Alpha Flight Services is a **long-standing client** of Total Construction, with over six successful projects delivered across Melbourne, Brisbane, Perth, Adelaide, Sydney, and Cairns. As demand for airline catering has grown, Total Construction has supported Alpha with **facility upgrades** ranging from 1,500 sqm to 10,000 sqm, including commercial kitchens (halal and non-halal), bakeries, cool rooms, freezers, secure duty-free areas, packaging rooms, and truck bays.

One notable upgrade included a new office fitout

with a high-end display kitchen, allowing Alpha to showcase seasonal menus to clients. The facility featured four blast chillers capable of processing eight trolleys at a time, along with food prep areas built using cool room panel systems to maintain strict temperature control.

With each project delivered in **live operating environments, maintaining uninterrupted service** was essential. Total Construction adapted to the unique climate challenges across Australia, modifying construction techniques—such as enhanced cold room panel design in hotter regions—to ensure reliable performance and timely delivery.

TIP TOP BAKERIES



CLIENT
George Weston Foods

PROJECT VALUE
\$20 million

CONTRACT TYPE
Design and Construct

LOCATIONS=
NSW, QLD

TIP TOP BAKERIES ARE AUSTRALIA'S LEADING MANUFACTURER OF BAKERY GOODS WITH AN EXTENSIVE RANGE OF WHOLESOME SLICED BREAD, MUFFINS, CRUMPETS, PIES, AND BAKERY SNACKS.

Total Construction has delivered key upgrades to Tip Top Bakeries facilities in Gateshead (NSW), Slacks Creek and Carrara (QLD) to support **increased production volumes and operational efficiency**. With demand for bread units on the rise, the works spanned across eight distribution lines and included the construction of a **new distribution warehouse, installation of automated packaging and handling equipment**, engineering workshop upgrades, and the addition of wash bays and crate washing equipment.

To enable the new fit out, demolition works were first undertaken, including slab cutting and the removal of tilt-up panels. Once cleared, the site was transformed with new production and packing areas, **enhanced workflow layouts**, and expanded support facilities. These changes aimed to streamline output while improving functionality across the operational areas.

Significant service enhancements were also completed to support the upgraded infrastructure. A **new HVAC system** was installed, featuring packaged units and **evaporative coolers for climate control**. Electrical works included **upgraded lighting and power distribution**, along with a new Distribution Board. In addition, new hydraulic services were installed, including a 5000L grease trap, ensuring **the facility meets both hygiene and compliance standards**.

CITY KITCHEN



CLIENT
Beak & Johnston

PROJECT VALUE
\$36 million

CONTRACT TYPE
Design & Construct

LOCATION
Arndell Park NSW

CITY KITCHEN IS A MANUFACTURER OF CHILLED AND FROZEN READY MEALS SUPPLYING TO SUPERMARKETS, AND FOOD SERVICE OPERATORS.

Total Construction was engaged to deliver a new purpose-built food production facility for Beak & Johnson City Kitchen. The project involved constructing a structural steel-framed warehouse with metal roof sheeting, concrete internal slabs, and a combination of metal, aluminium, PIR panel sheeting, and precast wall cladding. Internally, the facility features both high-care and low-care production areas, two racking storage zones, three freezers, a dedicated retail space, and a mezzanine level housing offices, lunchrooms, and changerooms.

Externally, the site was developed to include a main car park, additional parking to the north, and two loading docks to support the facility's operational needs. The facility layout was designed to optimise workflow and efficiency while meeting stringent food safety requirements.

The project team **successfully navigated challenges including asbestos-contaminated ground conditions** and the need to redesign core production areas due to the client's business growth. Through strategic program resequencing and design revisions, Total Construction ensured the facility could accommodate increased capacity, while also mitigating the impact of wet weather delays to keep the project on track.

'PROJECT DESTINY'



CLIENT

British American Tobacco
Australia

PROJECT VALUE

\$45 million

CONTRACT TYPE

Design & Construct

LOCATION

NSW

BAT AUSTRALIA IS PART OF THE BRITISH AMERICAN TOBACCO GROUP, A LEADING, MULTI-CATEGORY CONSUMER GOODS BUSINESS OPERATING INTERNATIONALLY.

Total Construction undertook significant alterations to an existing manufacturing facility to reduce its building footprint and allow for a future land subdivision. The existing factory was split into two separate buildings, with the project also delivering a new access road, car park, dual dock loading yard, and major services relocations to support the reconfiguration.

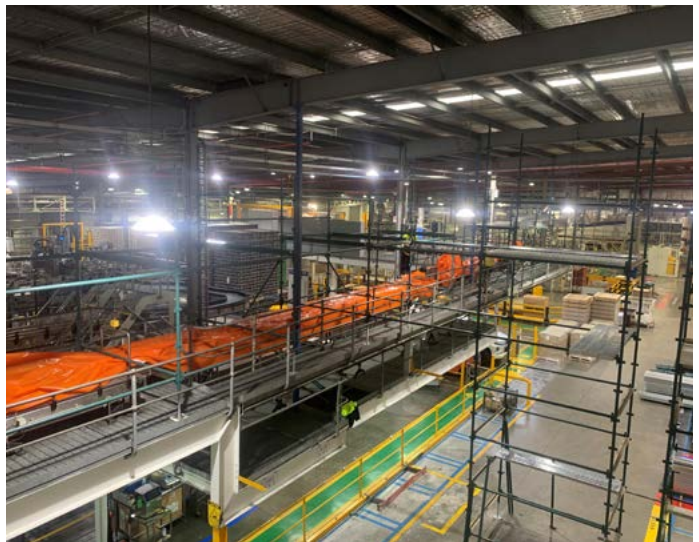
The project was delivered across three separable portions:

Separable Portion A involved internal demolition and the relocation of equipment, office spaces, and operations to make way for construction works.

Separable Portions B & C included structural strengthening to separate the existing facility into two independent buildings, construction of the new access road, car park, and reception area, removal of the existing roof to accommodate the road, and delivery of a new loading dock, yard, and slip lane.

Portion A, valued at \$15 million, was completed a full week ahead of schedule. A helicopter was used to safely remove high-value equipment during demolition, minimising disruption and preserving asset integrity.

ASAHI BEVERAGES



CLIENT
Asahi Beverages

PROJECT VALUE
\$12 million

CONTRACT TYPE
Design & Construct

LOCATION
Huntingwood NSW

ASAHI BEVERAGES IS ONE OF THE LEADING BEVERAGE COMPANIES IN AUSTRALIA AND NEW ZEALAND, PRODUCING AN EXTENSIVE RANGE OF ALCOHOL AND NON-ALCOHOL BEVERAGES.

Total Construction successfully delivered a series of construction and upgrade works at Asahi's Huntingwood facility to support the introduction of a new production line. This included the construction of new Syrup and Sugar Dissolver Rooms, a Cool Room to support the production process and in-floor drainage upgrades within the existing production area to accommodate the new line.

As part of the project, Total Construction also delivered a facility extension to provide additional storage space and a dedicated labelling room. A major component of the works involved a **comprehensive upgrade of the site's fire systems, including the installation of new sprinkler pipework, fire tanks, and a pump house.** Significant roof strengthening was also undertaken to support the new fire infrastructure, and a new fire access road was constructed to improve site-wide emergency access.

To meet shutdown deadlines, Total Construction developed a highly detailed construction schedule aligned with Asahi's operations. This ensured each trade had a clear, consecutive window to complete their scope of work efficiently and without delays.

WINGHAM BEEF EXPORTS



CLIENT

Wingham Beef Exports

PROJECT VALUE

\$6 million

CONTRACT TYPE

Construct Only

LOCATIONS

NSW

WINGHAM BEEF EXPORTS IS RECOGNISED FOR PRODUCING SOME OF AUSTRALIA'S FINEST GRASS-FED BEEF.

The project involved the construction of a new cold store and loading facility, a packaging 'Plate Freezer' structure, a truck turning area, and associated external works. Delivery was staged across three phases:

Stage 1: Establishment of a new truck access and turning area, providing alternative access to existing loading zones and enabling the next stages to proceed without disruption.

Stage 2: Demolition of existing structures to make way for a new building designed to house the supplier-installed 'Plate Freezer' packaging system.

Completion of this building was critical prior to the Plate Freezer unit's delivery at the end of June 2015.

Stage 3: Construction of the new cold store and loading facility.

The buildings were constructed using a structural steel framework, clad in metal sheeting, with insulated panel rooms built within the outer shell to meet operational requirements.

Delivering this project within an active, high-traffic site required a strong focus on safety and coordination.

This project was proudly recognised for its high standard of delivery, receiving an Excellence in Construction Award from the Master Builders Association.

ACCREDITATIONS

COMMITTED TO OPERATING INCIDENT AND INJURY FREE ACROSS ALL OUR PROJECTS.

We understand the complexities of commercial construction and firmly believe that workplace accidents are preventable through strong leadership, collaboration, continuous education, and ongoing improvement. Our commitment to incident and injury-free operations extends across all our projects and workplaces. By proactively conducting thorough risk assessments and meticulous planning, we work to eliminate potential hazards—consistently achieving injury key performance indicators that outperform the construction industry benchmark.



Total Construction is Fully Approved by the Federal Safety Commissioner

Total Construction is fully accredited by the Federal Safety Commissioner, enabling us to undertake Commonwealth-funded projects valued at \$4 million or more. Recently renewed through to 2030—the maximum term—our accreditation reflects our strong safety record and consistently exceptional audit results.



Occupational Health and Safety (OH&S) Management Systems

Total Construction is ISO 45001 accredited, demonstrating our commitment to proactive risk management and a strong safety culture. This international standard supports our goal of providing a safe, healthy workplace for all employees, contractors, and stakeholders.



Quality Management System

Total Construction's Business Management System is aligned with ISO 9001, overseeing all aspects of our operations. Our quality policy is focused on continuous improvement, ensuring the consistent delivery of high-quality projects, measured against clearly defined objectives and targets.



Environmental Management System

Total Construction has a strong focus on environmental responsibility, supported by ISO 14001. We comply with all relevant legislative and regulatory requirements and prioritise preventative measures to minimise environmental impact with a target to recycle at least 90% of all waste.

CORPORATE SOCIAL RESPONSIBILITY

WE ARE COMMITTED TO UPHOLDING THE HIGHEST STANDARDS OF CORPORATE SOCIAL RESPONSIBILITY, GUIDED BY OPEN COMMUNICATION, URGENCY, AND ACCOUNTABILITY.

We take ownership of our business, empowering our team members and fostering an environment where trust, respect, and ethical conduct thrive. We believe in developing and training our people to maintain high personal standards and skill sets, while promoting collaboration, positivity, and enthusiasm. By celebrating our collective successes, we create a unified, high-performing team dedicated to achieving excellence and making a positive impact on our communities.

CORPORATE GOVERNANCE

Total Construction is committed to the highest standards of corporate governance and ethical conduct. Our robust framework supports effective risk management, performance optimisation, and accountability—ensuring we meet our objectives and deliver value to all stakeholders.

DIVERSITY

At Total Construction, we take pride in the cultural diversity of our workforce, with a team with a wide range of nationalities and backgrounds. We believe this diversity is one of our greatest strengths, driving key outcomes such as innovation, creativity, informed decision-making, employee engagement, collaboration, safety and overall performance.

INCLUSION

Inclusive leadership is key to fostering a successful diversity & inclusion culture at Total Construction. By treating everyone fairly, embracing differences, and leveraging diverse perspectives, we enhance decision-making, create a psychologically safe workplace, and build stronger relationships with diverse clients and markets.

OUR AWARDS



TOTAL
CONSTRUCTION

EXCELLENCE IN
CONSTRUCTION
SINCE 1995



‘Making a positive difference in people’s lives
through excellence in construction.’

SYDNEY

9A George Street
North Strathfield NSW 2137

T: 02 9746 9555

MELBOURNE

Tenancy 1, Level 2
6 Palmer Pde
Cremorne VIC 3121

T: 03 9417 4744

BRISBANE

13/16 Metroplex Avenue
Murarrie QLD 4172

T: 07 3393 7700