

Project Case Study

**TOTAL
CONSTRUCTION**

Concept to Completion

Project

Aged Care Centre

Location

South Morang, Victoria

Client

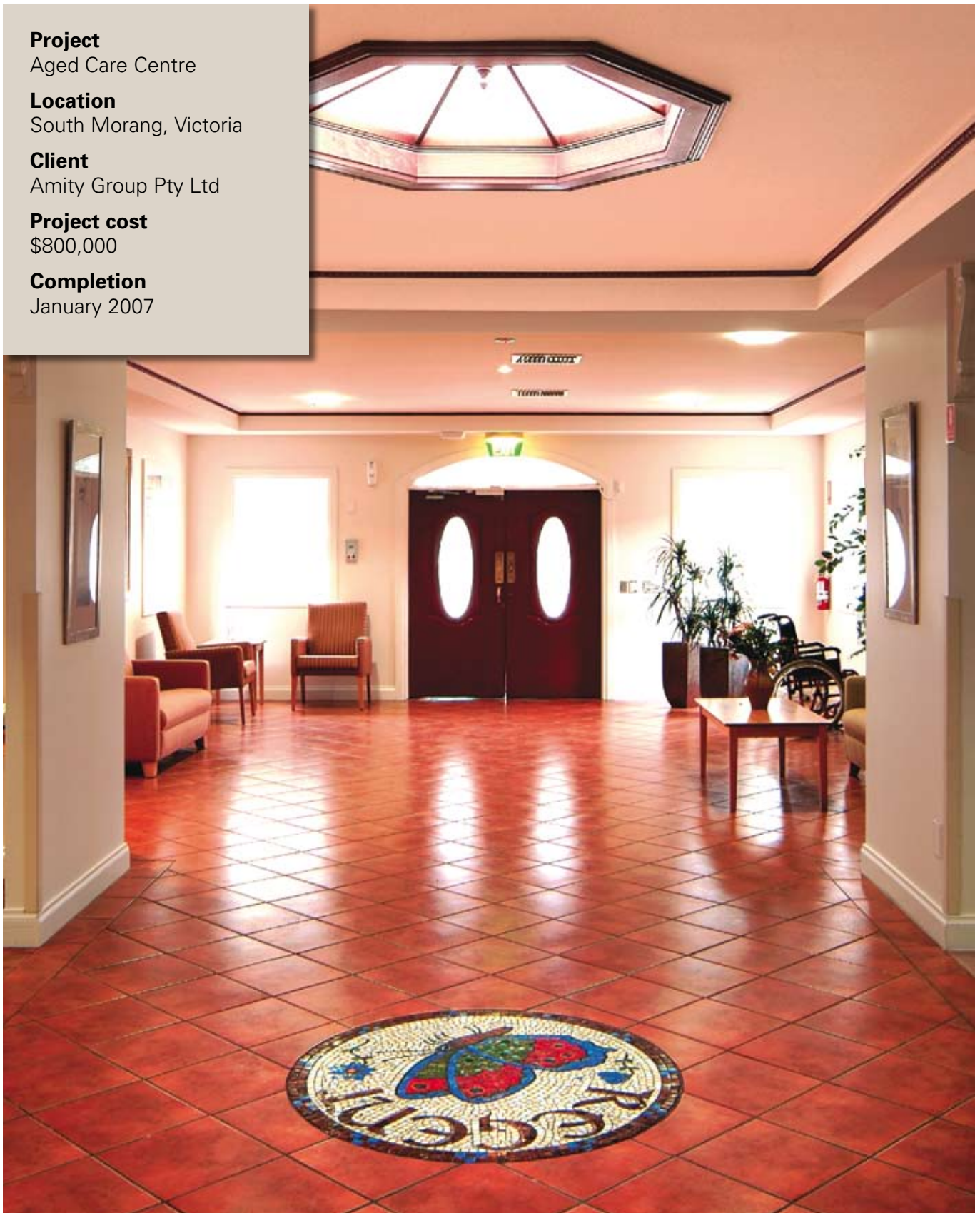
Amity Group Pty Ltd

Project cost

\$800,000

Completion

January 2007



Project Case Study

**TOTAL
CONSTRUCTION**

Concept to Completion

Project

Aged Care Centre

Location

South Morang, Victoria

Client

Amity Group Pty Ltd

Project cost

\$800,000

Completion

January 2007



Upgrading of existing aged care facility comprising the renovation of existing bathrooms, the creation of five shared bathrooms and building extensions to create 12 private en-suite bathrooms to bedrooms. This upgrade was designed to meet Commonwealth government requirements to achieve higher levels of care and higher levels of funding.

Lounges, corridors, dining and living rooms were also upgraded with new lighting, floor coverings and painting.

The works were staged and completed whilst the facility was fully operational.

Sydney &

Newcastle Level 2, 3 George St - PO Box 212 - North Strathfield NSW 2137

Melbourne Level 1, 21 Cremorne St - PO Box 2169 - Richmond South VIC 3121

Queensland Gateway Office Park, Building 1, 747 Lytton Rd, Murarrie QLD 4172

T 02 9746 9555 **F** 02 9746 9588

T 03 9417 4744 **F** 03 9417 7011

T 07 3117 3706 **F** 07 3117 3797

www.totalconstruction.com.au