

## Project Case Study

**TOTAL**  
**CONSTRUCTION**

Concept to Completion

### Project

Dan Murphy's  
Liquor Store

### Location

Fawkner, VIC

### Client

Woolworths Limited

### Project cost

\$2.6 million

### Completion

October 2010



# Project Case Study

**TOTAL  
CONSTRUCTION**

Concept to Completion

## Project

Dan Murphy's  
Liquor Store

## Location

Fawkner, VIC

## Client

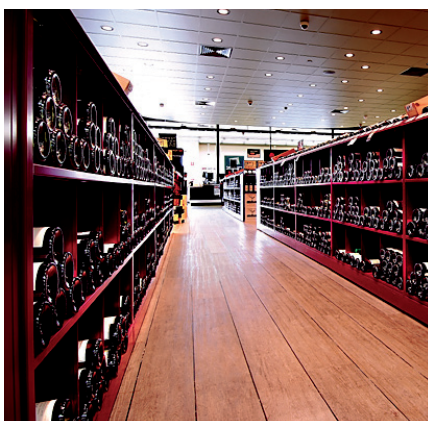
Woolworths Limited

## Project cost

\$2.6 million

## Completion

October 2010



This project was a green-field project on a vacant block of land on the busy Sydney Road, next to an existing hotel and bottle shop, also owned by Woolworths. The tight program of 125 days and the large extent of specialist trades and client contractors meant this was always a challenging project. Despite very wet weather the project was delivered on program.

The structure was strip footings, precast concrete wall panels, steel roof, plant platform and feature tower, and sandwich-panel roofing. The infill concrete slabs were polished and sealed to present a trademark modern feel. Internal fit out is minimalist with a feature drop ceiling over the wine area and walls painted in company colours. Back-of-house included a large loading bay with dock-leveller, staff areas, secure stores and access to the roof-mounted plant platform.

The front of the building was enhanced with an aluminium louvre clad tower, sections of Alucobond including a veranda, FC sheet clad battlement and feature stonework above the entrance. Large areas of kerbing, sealed car parking and landscaping added the finishing touches to this successful project.

An added challenge to this project was the need to keep the adjacent hotel car park and drive-in bottle shop functioning whilst extensive alterations, upgrades and services relocations to serve the new building were completed. This necessitated constant rearrangement of temporary roadways.

## Sydney &

**Newcastle** Level 2, 3 George St - PO Box 212 - North Strathfield NSW 2137

**Melbourne** Level 1, 21 Cremorne St - PO Box 2169 - Richmond South VIC 3121

**Queensland** Unit 12, 16 Metroplex Avenue, Murarrie QLD 4172

**T** 02 9746 9555 **F** 02 9746 9588

**T** 03 9417 4744 **F** 03 9417 7011

**T** 07 3393 7700 **F** 07 3348 8961

[www.totalconstruction.com.au](http://www.totalconstruction.com.au)